

H₂OTM

PERFORMANCE ₂ PARTS



- Breakthrough Technology
- Rigorous Testing
- Unrivalled Quality



Welcome to Quality Mark products.

We put purpose before profit and strive to be an extraordinary business to partner with and to work for. Always improving performance, delivering quality and achieving sustainable business excellence.

***Highest quality material**



***Excellent surface finish**



***CNC machining**



***100% leak tested**



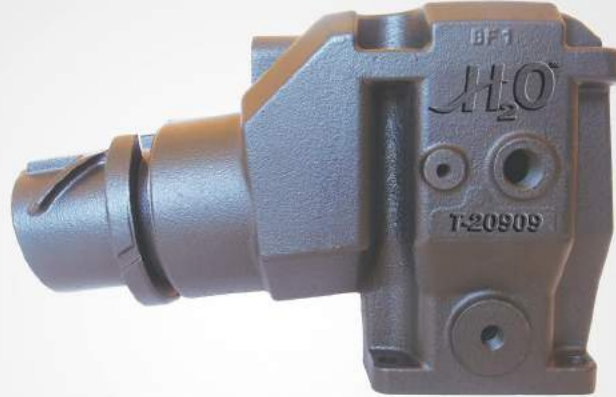
***In house painting**



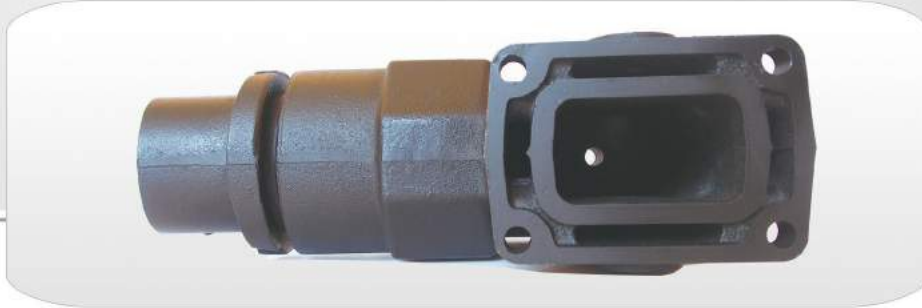
***Well packaged**



GM Small Block V8 305-350 cu.in.



T-20909 Riser, 4" exhaust outlet



Cross Reference

Barr # VO-20-913784

Volvo # 3855270-9

OMC # 913784, 3855270, 3850456

Sierra # 18-1909-1



*80942 Gasket



**20909- MK
Mounting kit, Riser**

Includes gasket and mounting hardware



**T-20986
Manifold**

GM Small Block V8 305-350 cu.in.



T-20986 Manifold, fit both side of engine



Cross Reference

Volvo # 3852374-2

OMC # 914035, 3852374

Sierra # 18-1986-1



20244- MK
Mounting kit, Riser

Includes gasket and mounting hardware

*80872 Gasket



T-20909 Riser

GM Small Block V8 305-350 cu.in.

Models 1979 to 1989



T-20902 Manifold, starboard



Cross Reference

Barr # OMC-1-912441
 OMC # 909280 and 912441
 Sierra # 18-1902



20244- MK
Mounting kit, Riser
 Includes gasket and mounting hardware

*80872 Gasket



T-20921
Riser

GM Small Block V8 305-350 cu.in.

Models 1979 to 1989



T-20903 Manifold, port



Cross Reference

Barr # OMC-1-912442
 OMC # 909312 and 908488
 Sierra # 18-1903



20244- MK
Mounting kit, Riser
 Includes gasket and mounting hardware



*80872 Gasket



T-20921
Riser

GM Small Block V8 305-350 cu.in.

Models 1976 to 1989

Riser used on multiple applications. Ford and GM.



T-20921 Riser

3-1/2" exhaust outlet, 60° down angle, and tapped to accept 3/4" MPT hose barb.



Cross Reference

Barr # OMC-20-982680

OMC # 909863

Sierra # 18-1921



20921- MK

Mounting kit, Riser

Includes gasket and mounting hardware

*80943 Gasket



**T-20902
Manifold**



**T-20903
Manifold**



**T-20986
Manifold**

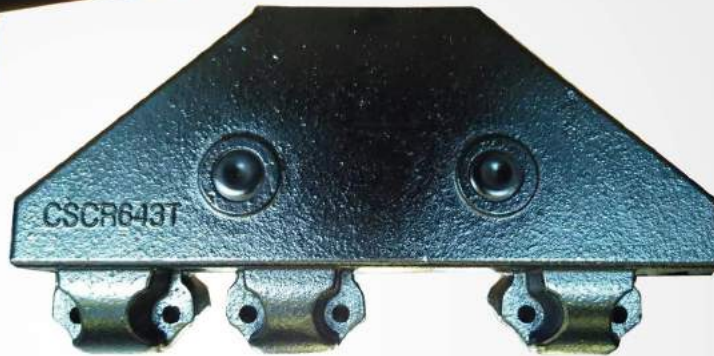
GM V6 262 cu.in

Models 1986 to 1990

OMC 4.3L with one-piece designs



T-20374 Riser
3.5" outlet



T-20643 Manifold
Replaces OMC # 984221 and 984222

T-20354 Hose Adapter, 3.5" - 4.5"



- * Small Stainless Clamp *6 pcs per side
- * Big Stainless Clamp *2 pcs per side
- * Bellows, Reducer. OMC # 912328
- * Bellows, Hump. OMC # 3852741



20643-MK
Mounting kit, Manifold
Includes gasket and mounting hardware

*82909 Gasket



20374-MK
Mounting kit, Riser
Includes gasket and mounting hardware

*82882 Gasket



Installation Procedure

PLEASE READ BEFORE EXHAUST COMPONENT INSTALLATION

External Paint/ Coatings: All QMI exhaust components have been painted for corrosion protection and to allow immediate installation out of the box. The black paint utilized will accept additional enamel top coats if the desire is to match the current OEM paint color.

Gasket/ Gasket Surfaces: During installation, it is recommended to remove the paint from any gasket surfaces. This provides the best seal as the exhaust gaskets are designed to be installed dry, without the use of any gasket sealants. The addition of sealants can result in gasket failure and subsequent water intrusion, either internally or externally. **DO NOT** remove the paint from the gasket mounting surfaces with any type of power tools or power assisted devices such as high speed rotary gasket removers, wire wheels, or sand paper flappers. Any type of mechanical or power paint removal could result in an uneven deck surface and improper sealing between components. The use of acetone or lacquer thinner will remove the paint without damaging the deck surface.

Pipe Plugs and Fittings: The pipe plugs and fittings for the exhaust components are tapered and should be installed to a snug fit and not-overtightened. Do not attempt to screw the plugs flush with the casting, this could result in an over-tightened situation. Over-tightened fittings can crack the casting, resulting in an unusable product.

Mounting Hardware: All mounting hardware supplied is of a grade 5 or higher, unless otherwise specified by the OE manufacturer. Lower grade bolts or stainless steel components are too soft and will not hold the proper torque setting if used in applications that are not designed for these materials. For proper sealing, torque settings should be reset after initial start and warm-up. Please refer to the original manufacturers service manual for specific torque setting. **STUD** installation requires the use of red thread locking compound to prevent studs from backing out or loosening during normal engine operation. **DO NOT** use any type of anti-seize on any mounting hardware as the lubricating properties will result in the hardware backing out.

If you have any questions, please contact us at QMI, Inc. (651)465-6613.



Warranty

THREE YEAR LIMITED WARRANTY QUALITY MARK, INC.

QUALITY MARK, INC., a Minnesota Corporation (the “Company”) and its authorized exclusive suppliers manufacture exhaust manifolds, risers and exhaust connectors for use in marine engines (the “Product”), among other things.

The Company warrants these Products against defects in workmanship and/or material to the

Original Purchaser for a period of three years from the date of purchase. For purposes of this warranty, the Original Purchaser must have purchased the Product for non-commercial use, from an authorized seller within the Company’s intended chain of sales and/or distribution for the Product’s intended use.



This warranty is subject to the following limitations:

The Company must be notified of any warranted defect within three years of purchase by the Original Purchaser. This warranty does not extend to anyone other than the Original Purchaser. The Company will not be responsible for the cost of shipping, removal or installation of the Product. Any Product that the Company determines is defective will be repaired or replaced as appropriate, at the Company’s sole option.

Any implied warranties such as merchantability or fitness are also hereby limited to the three-year period of this warranty except where otherwise prohibited. Similarly, the Company shall not be liable for any incidental, consequential or special damages except to the extent otherwise prohibited.

This warranty does not cover defects that are caused by ordinary wear and tear, modification, excessive use, misuse, improper installation and/or improper handling.