

H₂OTM

PERFORMANCE 2 PARTS



- Breakthrough Technology
- Rigorous Testing
- Unrivalled Quality



Welcome to Quality Mark products.

We put purpose before profit and strive to be an extraordinary business to partner with and to work for. Always improving performance, delivering quality and achieving sustainable business excellence.

***Highest quality material**



***Excellent surface finish**



***CNC machining**



***100% leak tested**



***In house painting**



***Well packaged**





GM V6 262 cu.in

All GM V-6 models 2004 and up

GM Small Block V8 305-350 cu.in

All Small Block GM V-8 models 2002 and up



T-20591 Dry Joint Riser

14° down angle



Cross Reference

Barr # MC-20-864591

MerCruiser # 864591T02

Sierra # 18-1845

**Mounting kit is coming soon*



T-20735 Dry Joint Manifold



T-20735 Dry Joint Manifold



Cross Reference

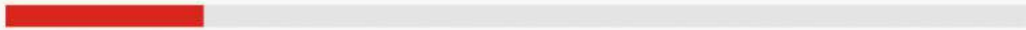
Barr # MC-1-865735

MerCruiser # 865735A02

Sierra # 18-1843



**Mounting kit is coming soon*



T-20591 Dry Joint Riser

GM L4 153 and 181 cu.in.

Models 120, 140, 2.5L, 3.0L



NEW



T-20956 Manifold

**Mounting kit is included*



Cross Reference

Barr # MC-1-860235

MerCruiser # 860235A04

Marine Power # 600333

Sierra # 18-1956-2



20956-MK

Mounting kit, Manifold

Includes gasket and mounting hardware



T-20975 Elbow

GM L4 153 and 181 cu.in.

Models 120, 140, 2.5L, 3.0L



NEW



T-20966 Manifold

**Mounting kit is included*



Cross Reference

MerCruiser # 860235A03

Sierra # 18-1966



20966-MK

Mounting kit, Manifold

Includes gasket and mounting hardware



T-20975 Elbow

GM V6 229 and 262 cu.in.

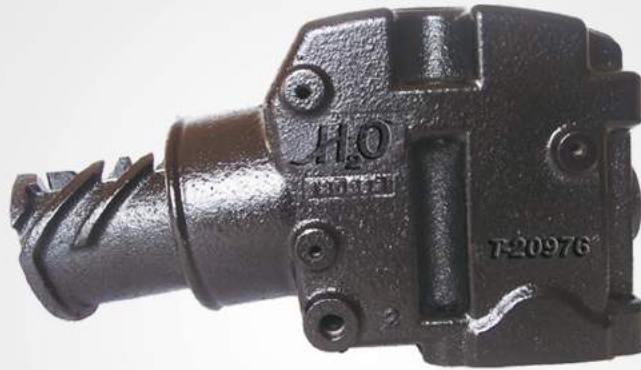
Models 185 and 205

GM Small Block V8 305-350 cu. in.

200, 228, 230 260 and 898

GM Big Block V8 454 cu.in.

330, 340 and 7.4L



T-20976 Riser

4" exhaust outlet, 7° down angle



Cross Reference

Barr # MC-20-44354

Marine Power # 0992-400

MerCruiser # 44354 / 807914 / 807988

Sierra # 18-1976-1



* 80897 Gasket



20976-MK

Mounting kit, Riser

Includes gasket and mounting hardware



T-20952 Manifold



T-20953 Manifold



T-20957 Manifold





T-20950 Manifold, port, log style manifold



Cross Reference

Barr # MC-1-77234

MerCruiser # 77234B

Sierra # 18-1950-1



*80872 Gasket



27214-MK

Mounting kit, Manifold

Includes gasket and mounting hardware



T-20971
Riser



T-20978
Riser



T-20951 Manifold, starboard, log style manifold



Cross Reference

Barr # MC-1-77235
MerCruiser # 77235B
Sierra # 18-1951-1



*80872 Gasket



27214-MK
Mounting kit, Manifold
Includes gasket and mounting hardware



T-20971
Riser



T-20978
Riser



T-20957 Manifold, fits both sides of engine



Cross Reference

Barr # MC-1-89011
MerCruiser # 89011
Sierra # 18-1957-1



*80418 Gasket



20957-MK
Mounting kit, Manifold
Includes gasket and mounting hardware



T-20970
Riser



T-20976
Riser

GM V6 229 and 262 cu.in.

Models 185 and 205

GM Small Block V8 305-350 cu. in.

200, 228, 230 260 and 898

GM Big Block V8 454 cu.in.

330, 340 and 7.4L



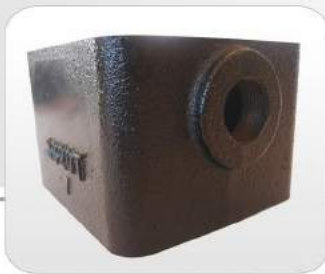
MERCruiser

CRUSADER CHRYSLER BARR INDMAR MARINEPOWER PLEASURCRAFT VOLVO OMC CHRIS CRAFT



T-20908 Spacer

3" center riser



Cross Reference

Barr # MC-20-93320A3

MerCruiser # 93320

Sierra # 18-1908

*80897 Gasket



20908-MK-X (with T-20976)
Mounting kit, Spacer
 Includes gasket and mounting hardware



*80897 Gasket



20908-MK (with T-20970)
Mounting kit, Spacer
 Includes gasket and mounting hardware



*82849 Gasket

*82849 Gasket



T-20976
Riser



T-20970
Riser

GM V6 229 and 262 cu.in.

GM Small Block V8 305-350 cu. in.

GM Big Block V8 454 cu.in.

Models 185 and 205

200, 228, 230 260 and 898

330, 340 and 7.4L



T-20985 Spacer

6" center riser



Cross Reference

Barr # MC-20-93322A3

MerCruiser # 93322

Sierra # 18-1985



20908-MK (to mount spacer to manifold) Mounting kit, Spacer

Includes gasket and mounting hardware



Riser T-20970 or T-20976 will require their own mounting kit.



T-20952 Manifold



T-20953 Manifold



T-20957 Manifold

MerCruiser 3.7L / 224 cu.in.



MERCUISER

CRUSADER CHRYSLER BARR INDMAR MARINEPOWER PLEASURCRAFT VOLVO OMC CHRIS CRAFT



T-20937 Elbow/Reservoir

Fits MerCruiser aluminum manifold # 93174
Cap included. Fitting not included.



Cross Reference

MerCruiser # 98562A6

Sierra # 18-1937



*80881 Gasket



20937-MK

Mounting kit, Elbow/Reservoir

Includes gasket and mounting hardware



T-20962

Manifold, starboard, log style manifold



Cross Reference

Bar # MC-1-65603

MerCruiser # 54099 and 65603

Sierra # 18-1962-1

*80183 Gasket



20560-MK

Mounting kit, Manifold

Includes gasket and mounting hardware



**T-20971
Riser**



**T-20978
Riser**



T-20958
Manifold, port, log style manifold



Cross Reference

Bar # MC-1-65604
MerCruiser # 54100 and 65604
Sierra # 18-1958-1

*80183 Gasket



20560-MK
Mounting kit, Manifold
Includes gasket and mounting hardware



T-20971
Riser



T-20978
Riser



GM In-Line Six Cylinder 250 cu.in

GM In-Line Six Cylinder 250, 292 cu.in.

GM small block V8 305-350 cu.in.

165 Equipped with Mercruiser riser

165 and 200

198, 228 and 898

#s 76351, 76325, 60426, 49964,
76771 or 60427



T-20978 Riser

3" exhaust outlet, 0° down angle,
for use in most inboard applications



Cross Reference

Barr # MC-20-76771

MerCruiser # 76771 / 60427

Sierra # 18-1978



*82833 Gasket



26371-MK

Mounting kit, Riser

Includes gasket and mounting hardware



T-20953 Manifold, fits both sides of engine



Cross Reference

- Barr # MC-1-87114
- Marine Power # 0994-100
- MerCruiser # 87114 / 860246
- Sierra # 18-1953-1

*80872 Gasket



27214-MK
Mounting kit, Manifold
Includes gasket and mounting hardware



T-20976
Riser

GM V6 229 and 262 cu.in.

GM Small Block V8 305-350 cu. in.

GM Big Block V8 454 cu.in.

Models 185 and 205

200, 228, 230 260 and 898

330, 340 and 7.4L



T-20970 Riser

3" exhaust outlet, 15° down angle. For early model inboard/outboards.



Cross Reference

Barr # MC-20-98504

MerCruiser # 98503 / 98504

Sierra # 18-1970-1



*80897 Gasket



28503-MK Mounting kit, Riser

Includes gasket and mounting hardware



T-20952 Manifold



T-20953 Manifold



T-20957 Manifold

GM In-Line Six Cylinder 250 and 292 cu.in.

165 and 200

GM Small Block V8 305-350 cu.in.

198, 228 and 898



T-20971 Riser

3" exhaust outlet, 90° down angle. For use in most inboard / outboard applications



Cross Reference

Barr # MC-20-60426 / MC-20-76351
MerCruiser # 76351 / 60426 / 49964
Sierra # 18-1971



*82833 Gasket



26371-MK

Mounting kit, Riser

Includes gasket and mounting hardware





GM V6 229 and 262 cu.in.

Models 185 and 205



T-20952 Manifold



Cross Reference

Barr # MC-1-99746
 Marine Power # 0996-000
 MerCruiser # 99745 / 99746
 Sierra # 18-1952-1

*82909 Gasket



20952-MK
Mounting kit, Manifold
 Includes gasket and mounting hardware



T-20976
Riser



T-20970
Riser



GM Four Cylinder 181 cu.in

Models 120/140/2.5L/3.2L

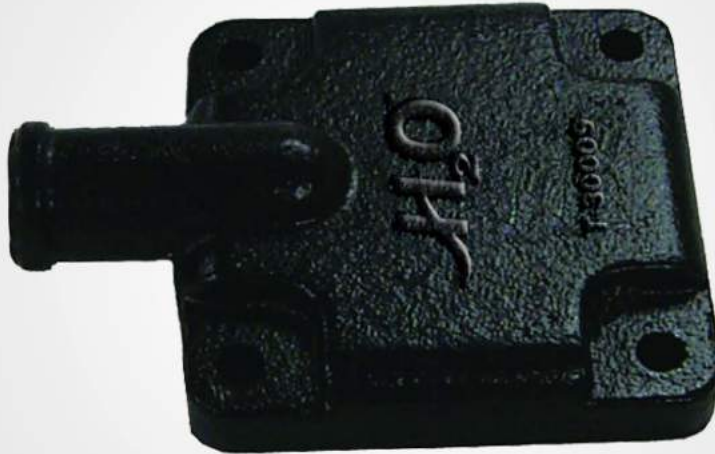
GM In-Line Six Cylinder 250 and 292 cu.in.

165 and 200

Ford Small Block V8 302-351 cu.in.

215, 225, 233, 255 and 888

***GM Small Block V8 305-350 cu.in. / Models 198, 228 and 898**



T-30009 End Plate

Cross Reference

MerCruiser # 60252

Sierra # 18-4009



*82832 Gasket



30009-MK

Mounting kit, End Plate

Includes gasket and mounting hardware



**T-20950
Manifold**



**T-20951
Manifold**



**T-20958
Manifold**



**T-20962
Manifold**



T-20906 Spacer, 3" rear riser.

Cross Reference

Barr # MC-20-61851A2
 MerCruiser # 61851
 Sierra # 18-1906



*82833 Gasket

20906-MK
Mounting kit, Spacer
 Includes gasket and mounting hardware

*Fit T-20950 and T-20951 manifolds with T-20971 or T-20978 risers

MerCruiser 3.7L / 224 cu.in.



T-20905 Elbow

Cross Reference

Barr # MC-20-90880
MerCruiser # 90880
Sierra # 18-1905



*80113 Gasket



20905-MK
Mounting kit, Elbow/Reservoir
Includes gasket and mounting hardware

GM V6 229 and 262 cu.in.

Models 185 and 205

GM Small Block V8 305-350 cu. in.

200, 228, 230 260 and 898

GM Big Block V8 454 cu.in.

330, 340 and 7.4L



T-20974 Riser, 3" 0° (3" O.D. Riser)

Cross Reference

MerCruiser # 98502A2

Sierra # 18-1974-1



*80897 Gasket



28503-MK

Mounting kit, Riser

Includes gasket and mounting hardware

GM Four Cylinder 181 cu.in.

Models 120 / 140 / 2.5L / 3.0L

* T-20975 riser replaces the early Mercruiser 2-piece riser setup from Mercruiser using # 76325 riser with an off-set adapter #95863.



T-20975 Riser

4" exhaust outlet, 90° down angle



Cross Reference

MerCruiser # 12076

Sierra # 18-1975-1



*82833 Gasket

20975-MK

Mounting kit, Riser

Includes gasket and mounting hardware





Installation Procedure

PLEASE READ BEFORE EXHAUST COMPONENT INSTALLATION

External Paint/ Coatings: All QMI exhaust components have been painted for corrosion protection and to allow immediate installation out of the box. The black paint utilized will accept additional enamel top coats if the desire is to match the current OEM paint color.

Gasket/ Gasket Surfaces: During installation, it is recommended to remove the paint from any gasket surfaces. This provides the best seal as the exhaust gaskets are designed to be installed dry, without the use of any gasket sealants. The addition of sealants can result in gasket failure and subsequent water intrusion, either internally or externally. **DO NOT** remove the paint from the gasket mounting surfaces with any type of power tools or power assisted devices such as high speed rotary gasket removers, wire wheels, or sand paper flappers. Any type of mechanical or power paint removal could result in an uneven deck surface and improper sealing between components. The use of acetone or lacquer thinner will remove the paint without damaging the deck surface.

Pipe Plugs and Fittings: The pipe plugs and fittings for the exhaust components are tapered and should be installed to a snug fit and not-overtightened. Do not attempt to screw the plugs flush with the casting, this could result in an over-tightened situation. Over-tightened fittings can crack the casting, resulting in an unusable product.

Mounting Hardware: All mounting hardware supplied is of a grade 5 or higher, unless otherwise specified by the OE manufacturer. Lower grade bolts or stainless steel components are too soft and will not hold the proper torque setting if used in applications that are not designed for these materials. For proper sealing, torque settings should be reset after initial start and warm-up. Please refer to the original manufacturers service manual for specific torque setting. **STUD** installation requires the use of red thread locking compound to prevent studs from backing out or loosening during normal engine operation. **DO NOT** use any type of anti-seize on any mounting hardware as the lubricating properties will result in the hardware backing out.

If you have any questions, please contact us at QMI, Inc. (651)465-6613.



Warranty

THREE YEAR LIMITED WARRANTY QUALITY MARK, INC.

QUALITY MARK, INC., a Minnesota Corporation (the “Company”) and its authorized exclusive suppliers manufacture exhaust manifolds, risers and exhaust connectors for use in marine engines (the “Product”), among other things.

The Company warrants these Products against defects in workmanship and/or material to the

Original Purchaser for a period of three years from the date of purchase. For purposes of this warranty, the Original Purchaser must have purchased the Product for non-commercial use, from an authorized seller within the Company’s intended chain of sales and/or distribution for the Product’s intended use.



This warranty is subject to the following limitations:

The Company must be notified of any warranted defect within three years of purchase by the Original Purchaser. This warranty does not extend to anyone other than the Original Purchaser. The Company will not be responsible for the cost of shipping, removal or installation of the Product. Any Product that the Company determines is defective will be repaired or replaced as appropriate, at the Company’s sole option.

Any implied warranties such as merchantability or fitness are also hereby limited to the three-year period of this warranty except where otherwise prohibited. Similarly, the Company shall not be liable for any incidental, consequential or special damages except to the extent otherwise prohibited.

This warranty does not cover defects that are caused by ordinary wear and tear, modification, excessive use, misuse, improper installation and/or improper handling.